



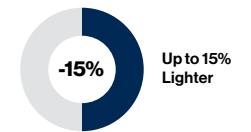
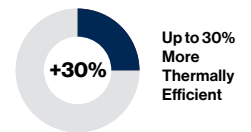
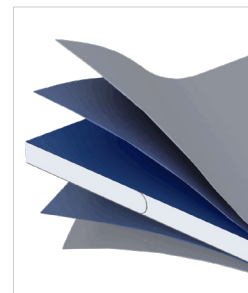
Base model shown with added options

Add to Your Bottom Line. Reduce Your Carbon Footprint.

The Wabash Acutherm Refrigerated Freight Body with EcoNex Technology is setting breakthrough performance standards. With up to 30% more thermal efficiency in a body that is up to 15% lighter, this is the stand-alone choice for bottom line growth.

Features

- Seamless exterior enables smooth, full-wall decaling
- Stainless steel rear frame provides added durability
- One Piece Header System eliminates corner caps, increasing front wall strength
- Smooth, seamless interior liner for a consistently flat and brighter food grade surface
- Engineered to significantly reduce water intrusion for longer insulation life
- EcoNex manufacturing process and operational benefits support sustainability objectives



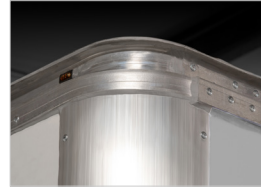
Why EcoNex?

EcoNex is manufactured under environmentally-conscious processes and comprised of a foam-insulated core, encapsulated in a polymer fiber-reinforced shell with a protective gel coat surface. It provides unsurpassed improvement in thermal performance over conventional construction, prevents water intrusion and slows foam degradation. EcoNex ultimately extends equipment life, all while providing the benefits of its sustainable design.

Specifications

WIDTH <small>(exterior)</small>	LENGTH <small>(exterior)</small>	HEIGHT <small>(exterior)</small>		
		91"	97"	103"
96"	16'	•		
	26'		•	
102"	26'		•	•

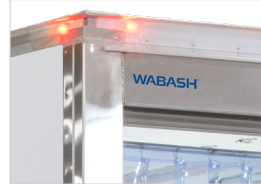
• Available sizes limited by chassis type



One piece aluminum header system



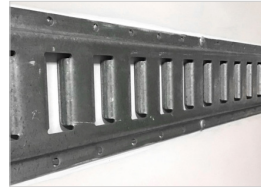
Folding reefer steps



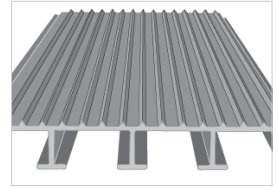
Stainless steel rear frame



Anti-microbial composite interior liner



Bonded and riveted E-track



Inverted "T" aluminum extruded non-slip floor

Chassis Type	<ul style="list-style-type: none"> • Cab
Truck Body Type	<ul style="list-style-type: none"> • Insulated
Insulation	<ul style="list-style-type: none"> • 3" EcoNex - roof • 3" EcoNex - side walls • 4" EcoNex - front wall, floor
Front	<ul style="list-style-type: none"> • One-piece aluminum header • Extruded-aluminum radius vertical front corners • EcoNex wall design with integral reinforcements • Refrigeration reinforcement frame
Lining	<ul style="list-style-type: none"> • Seamless, anti-microbial composite walls, roof and front wall
Scuff	<ul style="list-style-type: none"> • 6" corrugated aluminum - sides • 6" smooth aluminum - front
Rear Frame	<ul style="list-style-type: none"> • Brushed/polished stainless steel • 7 ga threshold steel with bolt holes for bolt on liftgate • 12 ga header and corner posts
Rear Door	<ul style="list-style-type: none"> • Medium-temp, insulated roll-up • Safety release and lockable hasp
Floor	<ul style="list-style-type: none"> • Inverted "T" aluminum extruded non-slip floor • Four integral Kazoo drains
Subframe	<ul style="list-style-type: none"> • 6" channel longsills galvanized
Roof	<ul style="list-style-type: none"> • EcoNex roof system • Seamless construction for a smooth interior and exterior

Interior Lights	<ul style="list-style-type: none"> • LED interior motion sensor dome light – hot wired • Sealed wire harness system
Exterior Lights	<ul style="list-style-type: none"> • LED clearance lights • Existing chassis tail lights
Bumper	<ul style="list-style-type: none"> • Pooched ICC
Safety	<ul style="list-style-type: none"> • Conspicuity tape
Warranty	<ul style="list-style-type: none"> • 1-year white surface and leaks • 3-year/36,000-mile limited bulkhead-to-bumper warranty • 5-year limited structural warranty (roof, wall and floor structure) • See our warranty policy for details

Options

Front	<ul style="list-style-type: none"> • Refrigeration unit installation (single-temp) • Refrigeration unit access steps (4) with grab handle
Floor	<ul style="list-style-type: none"> • Extruded aluminum box-type reefer floor - smooth or non-skid
Side Doors	<ul style="list-style-type: none"> • Single-swing (36" x 73") with stirrup step and grab handle; forward and rear opening dependent on location – limited to one curbside on selected models
Scuff	<ul style="list-style-type: none"> • 12" corrugated aluminum
Cargo Control	<ul style="list-style-type: none"> • Bonded and riveted E-track
Liftgates	<ul style="list-style-type: none"> • Contact your representative for more information